

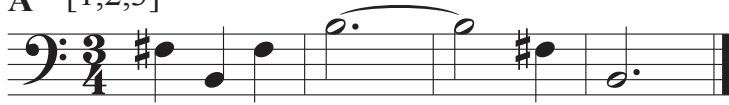
Harmonic Series Bb Etudes 1 for Hn in F

The harmonic series is the basis for the pitches played by the family of brass instruments. Each finger combination plays the notes of its own harmonic series.

All notes are to be played with the B \flat thumb trigger engaged.

Each etude is to be played using a single finger combination as noted in brackets [].

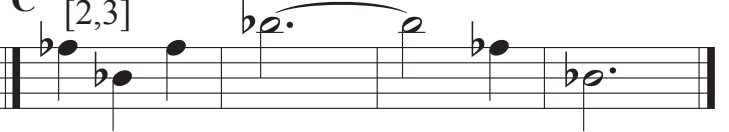
A [1,2,3]



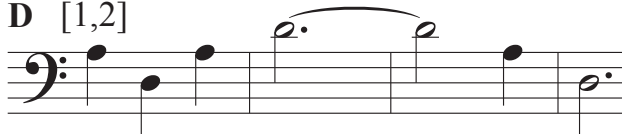
B [1,3]



C [2,3]



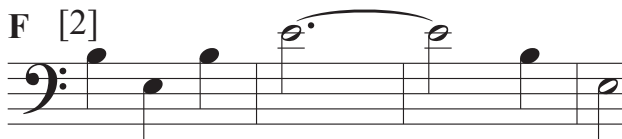
D [1,2]



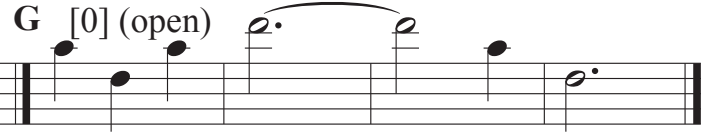
E [1]



F [2]



G [0] (open)



H [1,2,3]



I [1,3]



J [2,3]



K [1,2]



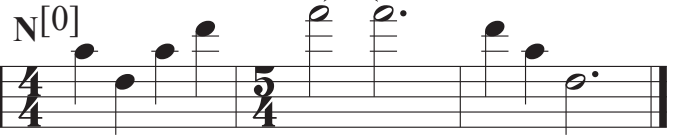
L [1]



M [2]



N[0]



These are the notes of the harmonic series for each finger combination including the thumb trigger.

O [1,2,3]

Musical notation for harmonic series O [1,2,3] in bass clef, showing notes: G2, A2, B2, C3, D3, E3, F3, G3, A3, B3, C4, D4, E4, F4, G4, A4, B4, C5.

Musical notation for harmonic series [1,3] and [2,3]. The first part shows [1,3] in bass clef (G2, A2, B2, C3) and the second part shows [2,3] in bass clef (B2, C3, D3, E3).

Musical notation for harmonic series [1,2] and [1]. The first part shows [1,2] in bass clef (G2, A2, B2, C3) and the second part shows [1] in bass clef (G2, A2, B2, C3).

Musical notation for harmonic series [2] and [0]. The first part shows [2] in treble clef (G3, A3, B3, C4) and the second part shows [0] in treble clef (G3, A3, B3, C4).

Each phrase shown below should be played using the harmonic series with [1,2].

They should also be played using the other valve combinations much like the examples on page 1. For example, play phrase 'R' through 'U' using [2], as well as other combinations.

P

Musical notation for phrase P in treble clef, 3/4 time signature. Notes: G4, A4, B4, C5, G4, A4, B4, C5, G4, A4, B4, C5, G4, A4, B4, C5.

Q

Musical notation for phrase Q in treble clef, 4/4 time signature. Notes: G4, A4, B4, C5, G4, A4, B4, C5, G4, A4, B4, C5, G4, A4, B4, C5.

R

Musical notation for phrase R in treble clef, 5/4 time signature. Notes: G4, A4, B4, C5, G4, A4, B4, C5, G4, A4, B4, C5, G4, A4, B4, C5.

S

Musical notation for phrase S in treble clef, 5/4 time signature. Notes: G4, A4, B4, C5, G4, A4, B4, C5, G4, A4, B4, C5, G4, A4, B4, C5.

Use only the fingering shown for each measure.

T

[1,3] [2,3]

[1,2] [1]

[2] [0]

U

[1,3] [2,3]

[1,2] [1]

[2] [0]

V

[1,3] [2,3]

[1,2] [1]

[2] [0]