

F Horn Easy Meter Etudes 1: Duple 4

Panaiotis

1

2 3 4 5 6 7 8 9

10 11 12 13 14 15 16 17 18

19 20 21 22 23 24 25 26 27

Exercise 1 is a 27-measure piece in 2/4 time with a key signature of two flats. It consists of a single melodic line. Measures 1-9 are quarter notes, 10-18 are eighth notes, and 19-27 are quarter notes. The piece ends with a double bar line.

2

2 3 4 5 6 7 8 9

10 11 12 13 14 15 16 17 18

19 20 21 22 23 24 25 26 27

Exercise 2 is a 27-measure piece in 2/4 time with a key signature of two flats. It consists of a single melodic line. Measures 1-9 are quarter notes, 10-18 are eighth notes, and 19-27 are quarter notes. There are rests in measures 6, 12, 18, and 24. The piece ends with a double bar line.

3

2 3 4 5 6 7 8 9

10 11 12 13 14 15 16 17 18

19 20 21 22 23 24 25 26 27

Exercise 3 is a 27-measure piece in 2/4 time with a key signature of two flats. It consists of a single melodic line. Measures 1-9 are quarter notes, 10-18 are eighth notes, and 19-27 are quarter notes. There are rests in measures 6, 12, 18, and 24. The piece ends with a double bar line.

4

2 3 4 5 6 7 8 9

10 11 12 13 14 15 16 17 18

19 20 21 22 23 24 25 26 27

Detailed description: This block contains the first exercise, numbered 4. It consists of three staves of music in treble clef with a key signature of one sharp (F#) and a 2/4 time signature. The first staff contains measures 4 through 9, with measure numbers 2 through 9 written above the notes. The second staff contains measures 10 through 18, with measure numbers 11 through 18 written above the notes. The third staff contains measures 19 through 27, with measure numbers 20 through 27 written above the notes. The music features a sequence of eighth and quarter notes.

5

2 3 4 5 6 7 8 9

10 11 12 13 14 15 16 17 18

19 20 21 22 23 24 25 26 27

Detailed description: This block contains the second exercise, numbered 5. It consists of three staves of music in treble clef with a key signature of one sharp (F#) and a 2/4 time signature. The first staff contains measures 5 through 9, with measure numbers 2 through 9 written above the notes. The second staff contains measures 10 through 18, with measure numbers 11 through 18 written above the notes. The third staff contains measures 19 through 27, with measure numbers 20 through 27 written above the notes. The music features a sequence of eighth and quarter notes.

6

2 3 4 5 6 7 8 9

10 11 12 13 14 15 16 17 18

19 20 21 22 23 24 25 26 27

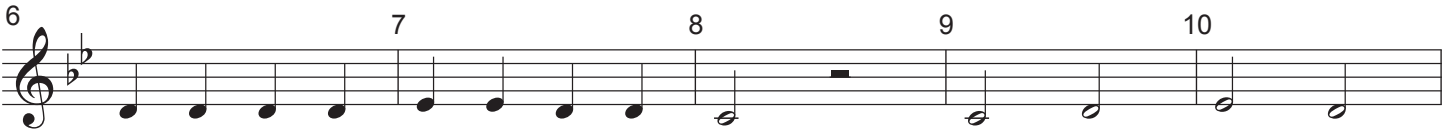
Detailed description: This block contains the third exercise, numbered 6. It consists of three staves of music in treble clef with a key signature of one sharp (F#) and a 2/4 time signature. The first staff contains measures 6 through 9, with measure numbers 2 through 9 written above the notes. The second staff contains measures 10 through 18, with measure numbers 11 through 18 written above the notes. The third staff contains measures 19 through 27, with measure numbers 20 through 27 written above the notes. The music features a sequence of eighth and quarter notes, with some notes beamed together.

F Horn Easy Meter Etudes 1: Duple 4

7



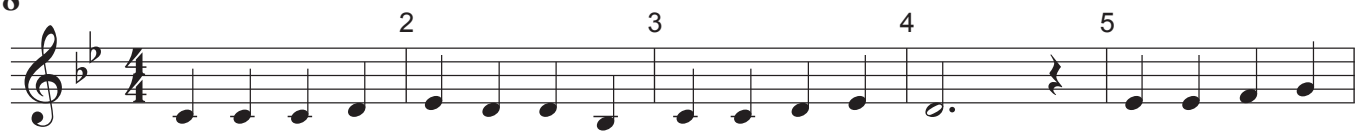
6



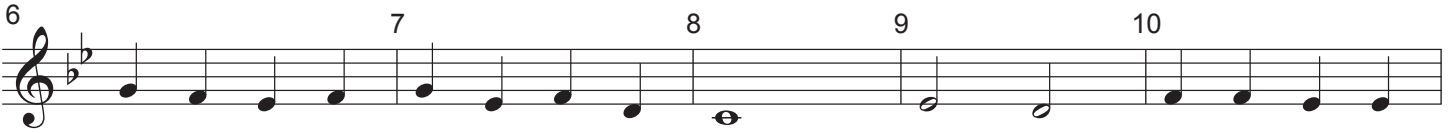
11



8



6



11



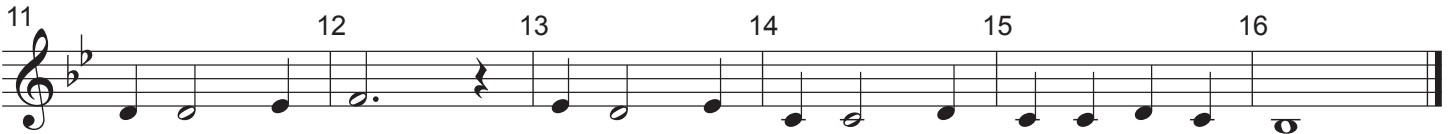
9



6



11



F Horn Easy Meter Etudes 1: Duple 4

10

Exercise 10 is in 4/4 time. The first staff (measures 1-5) starts with a treble clef and a key signature of one sharp (F#). The notes are: 1 (C4), 2 (D4), 3 (E4), 4 (F#4), 5 (G4). The second staff (measures 6-11) continues: 6 (A4), 7 (B4), 8 (C5), 9 (B4), 10 (A4), 11 (G4). The third staff (measures 12-16) continues: 12 (F#4), 13 (E4), 14 (D4), 15 (C4), 16 (B3). The piece ends with a double bar line.

11

Exercise 11 is in 4/4 time. The first staff (measures 1-5) starts with a treble clef and a key signature of two sharps (F# and C#). The notes are: 1 (C4), 2 (D4), 3 (E4), 4 (F#4), 5 (G4). The second staff (measures 6-11) continues: 6 (A4), 7 (B4), 8 (C5), 9 (B4), 10 (A4), 11 (G4). The third staff (measures 12-16) continues: 12 (F#4), 13 (E4), 14 (D4), 15 (C4), 16 (B3). The piece ends with a double bar line.

12

Exercise 12 is in 4/4 time. The first staff (measures 1-5) starts with a treble clef and a key signature of two sharps (F# and C#). The notes are: 1 (C4), 2 (D4), 3 (E4), 4 (F#4), 5 (G4). The second staff (measures 6-10) continues: 6 (A4), 7 (B4), 8 (C5), 9 (B4), 10 (A4). The third staff (measures 11-16) continues: 11 (G4), 12 (F#4), 13 (E4), 14 (D4), 15 (C4), 16 (B3). The piece ends with a double bar line.